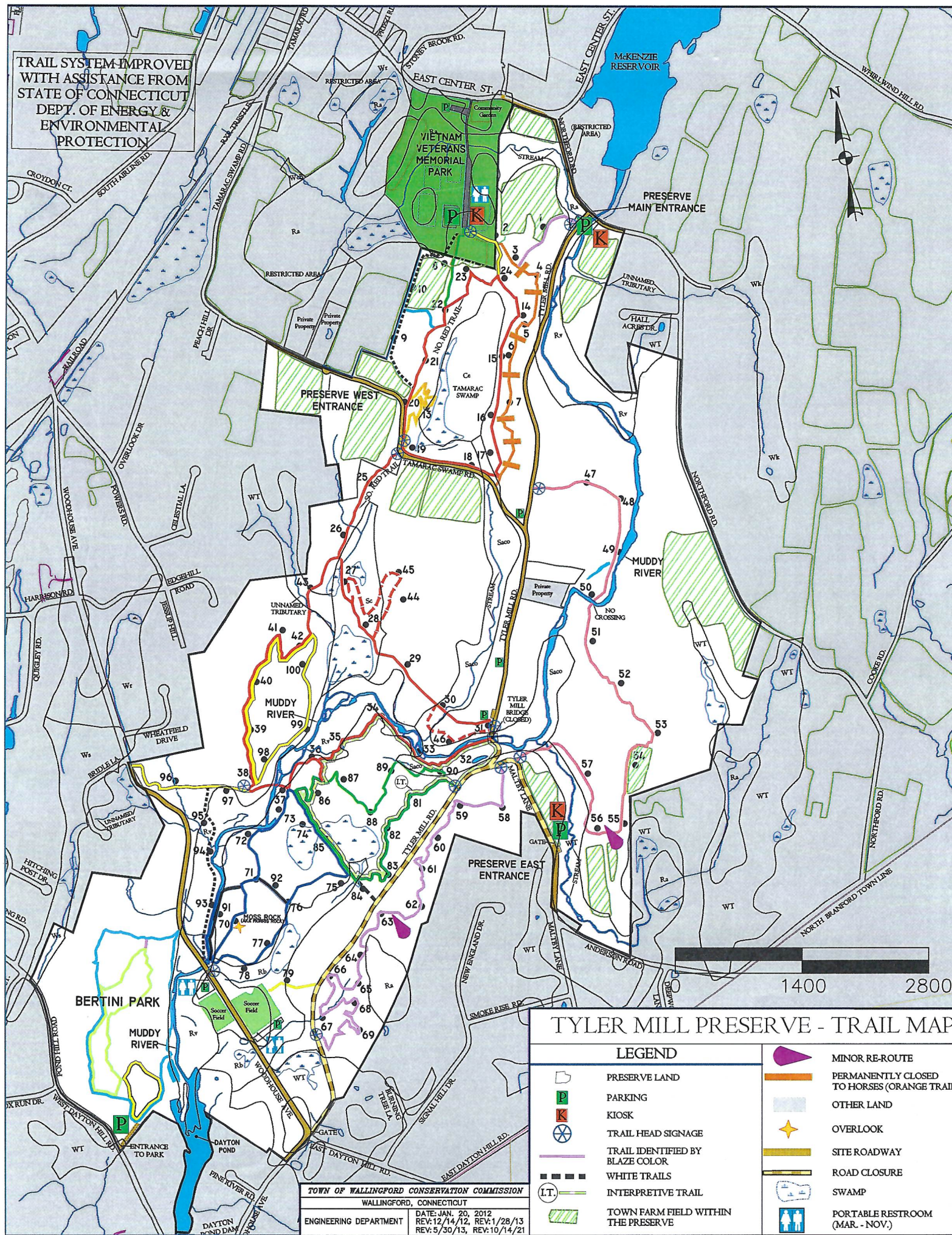


TRAIL SYSTEM IMPROVED
WITH ASSISTANCE FROM
STATE OF CONNECTICUT
DEPT. OF ENERGY &
ENVIRONMENTAL
PROTECTION



TYLER MILL PRESERVE - TRAIL MAP

LEGEND

- PRESERVE LAND
- PARKING
- KIOSK
- TRAIL HEAD SIGNAGE
- TRAIL IDENTIFIED BY BLAZE COLOR
- WHITE TRAILS
- INTERPRETIVE TRAIL
- TOWN FARM FIELD WITHIN THE PRESERVE

- MINOR RE-ROUTE
- PERMANENTLY CLOSED TO HORSES (ORANGE TRAIL)
- OTHER LAND
- OVERLOOK
- SITE ROADWAY
- ROAD CLOSURE
- SWAMP
- PORTABLE RESTROOM (MAR. - NOV.)

TOWN OF WALLINGFORD CONSERVATION COMMISSION
WALLINGFORD, CONNECTICUT
ENGINEERING DEPARTMENT
DATE: JAN. 20, 2012
REV: 12/14/12, REV: 1/28/13
REV: 5/30/13, REV: 10/14/21

OFFICIAL TRAIL MAP PER TOWN OF WALLINGFORD

TYLER MILL PRESERVE

TOWN-OWNED AND MANAGED OPEN SPACE

Please help us protect the trees, plants, wildlife, wetlands and watercourses

- No dumping or littering
- No camping or campfires
- Leash your dog
- Use trails when hiking, horseback riding or biking
- No motorized vehicle uses off-road
- No ATV's
- No digging
- No disturbance or removal of plants, trees, rocks, historic objects or signage
- Fishing and hunting by permit only
- CAUTION: Yield to horses
- No trail blazing (trail creation or marking)

**PLEASE STAY ON OFFICIAL BLAZED
(COLOR-CODED) TRAILS PER TOWN MAP**

THANK YOU

PUBLIC SAFETY NOTICE

Small game hunting by permit only in
designated areas:

October – February

Monday, Wednesday, Saturday &
Thanksgiving Day

Other Uses

Tuesday, Thursday, Friday & Sunday
during hunting season

Do not use on hunting days for safety reasons.

PARK CLOSES AT SUNSET!

Permit required for organized
groups of 20 or more people.

Apply to Wallingford Parks &
Recreation Department.

Hunting violations: Call
Wallingford Police 203 294-2800 or
DEEP 800 842-4357

Other Problems: Call Wallingford
Parks & Recreation Department
203 294-2121

Trails	
color	length*
Tyler Mill North	
lavender	0.2
yellow	0.15
green	0.17
orange (no horses)	0.5
white	0.5
aqua	0.09
north red loop	1.2
mustard	0.2
Tyler Mill South	
pink	1.3
south red loop	2.4
north red side trail	0.4
south red side trail	0.2
purple	1.4
yellow	0.7
green loop	1.2
blue loop	1.3
east black trail	0.09
west black trail	0.2
south white trail	0.3
gold trail	0.15
Bertini Park	
blue loop	1.1
green loop	0.8
yellow loop	0.3
Total	14.7

*length in miles

NUMBERS ON THE TRAILS



These numbered signs on the trails are a safety feature we have incorporated into the trail system. Pay attention to these signs as you hike or ride the trails. If you have an accident or feel you are lost, they are your guide to tell others where you are located. The kiosk maps, the fire department and the police department all have copies of the numbered maps as a guide should anyone need to be found. The signs are about 8' up on trees, approximately 600' apart.